

(Dimensions according to Annex A)

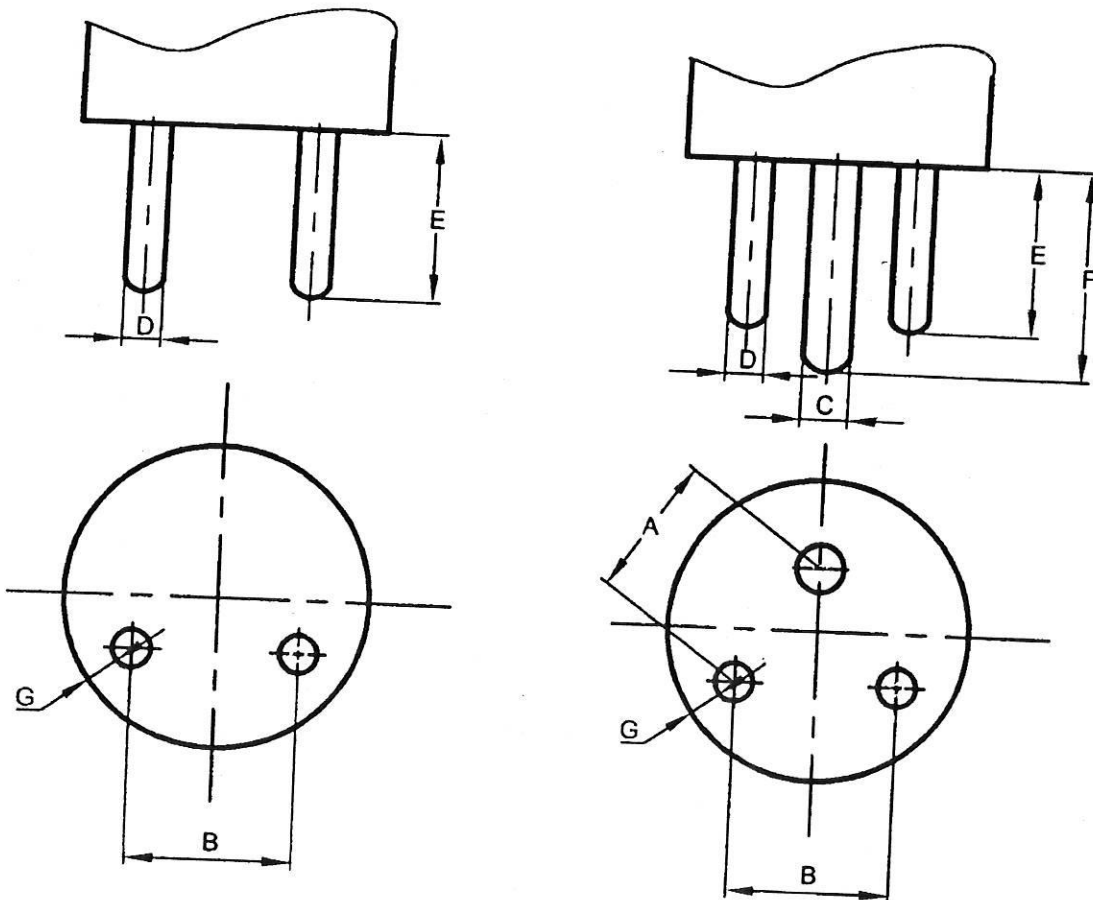
NOTE — The mass to be equally positioned around the centre line(s) of the pin.

FIG. 42 GAUGE FOR THE VERIFICATION OF THE MINIMUM WITHDRAWAL FORCE

ANNEX A

(Clauses 9.1 and 9.3)

DIMENSIONS OF PLUGS AND SOCKET-OUTLETS



(1)	Rating		
	2.5 A mm (2)	6A/10A mm (3)	16A mm (4)
<i>A</i>	—	-22.2 ± 0.15	28.6 ± 0.15
<i>B</i>	19.10 ± 0.15 $16.50^{1)} \pm 0.10$	19.1 ± 0.15	25.4 ± 0.15
<i>C</i>	—	$7.06^{+0.025}_{-0.050}$	$8.71^{+0.025}_{-0.050}$
<i>D</i>	$5.08^{+0.025}_{-0.050}$	$5.08^{+0.025}_{-0.050}$	$7.06^{+0.025}_{-0.050}$
<i>E</i>	$15.9^{+1.04}_{-0.13}$	$15.9^{+1.04}_{-0.13}$	$20.6^{+1.04}_{-0.13}$
<i>F</i>	—	$20.6^{+1.04}_{-0.13}$	$28.6^{+1.04}_{-0.13}$
<i>G²⁾, Min</i>	7.94	7.94	9.52
<i>H</i>	5.16 to 7.54	5.16 to 7.54	6.76 to 9.12
<i>K</i>	—	6.0	8.0
Nominal width of slot: Current-carrying pin	0.6	0.6	0.8
Earthing-pin	0.8	0.8	0.8
Minimum length of slot : Current-carrying pin		7.5	10.5
Earthing-pin		10.5	17.0

NOTES

1 The measurement of width of slot of current carrying pins and earthing pin shall be carried out at the bottom of the slot.

2 Dimension 'K' is applicable for non-shutter type socket-outlets only.

H = distance between the base of plug and socket-outlets at position of first contact of live pins.

¹⁾ Shall be phased out after 30 June 2005.

²⁾ Dimension 'G' is the minimum distance between the pins (live and neutral) and the periphery of the plug. If is not applicable for the earth pin.

K = diameter of holes in the socket-outlet plate or cover from the reception of current-carrying plug pins.